

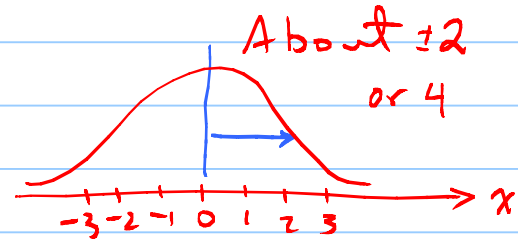
## Lecture 1 (CR.1)

Statistics (at this level) is NOT Math!  
But there is a lot of math in it.

It is extremely ambiguous. How wide is this curve?

It is more like a language. 2

"At the 95% confidence level, the observed confidence interval covers the true/population regression fit at a given  $x$ ."



hw lect1 1:

Google the string "normal histogram" and select Images. Choose the first image you see, and tell me how wide it is. Include the image itself in your submission.