

Branching Processes; Probability Generating Function Plots

Jon A. Wellner
11 November 2013

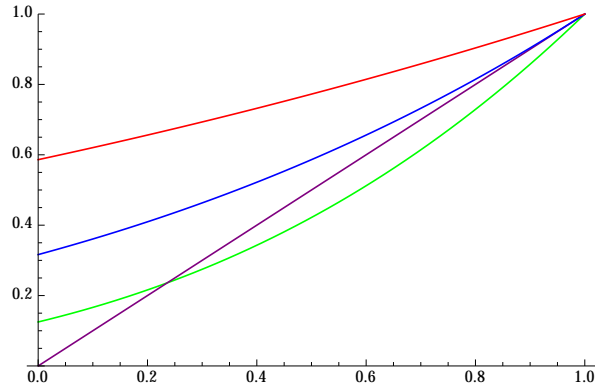


Figure 1: Probability Generating Functions, $Y_i \sim \text{Binomial}(n, p)$: $n = 3, p = 1/2 =$ green; $n = 4, p = 1/4 =$ blue; $n = 4, p = 1/8 =$ red

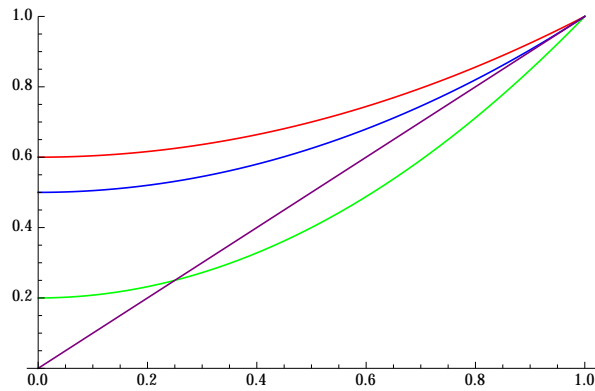


Figure 2: Binary offspring distribution, $P(Y_i = 2) = a, P(Y_i = 0) = 1 - a$: $a = .8,$ green; $a = .4,$ red; $a = .5,$ blue.