

Appendix to an article “Local Structure Discovery in Bayesian Networks” by Niinimäki and Parviainen

June 29, 2012

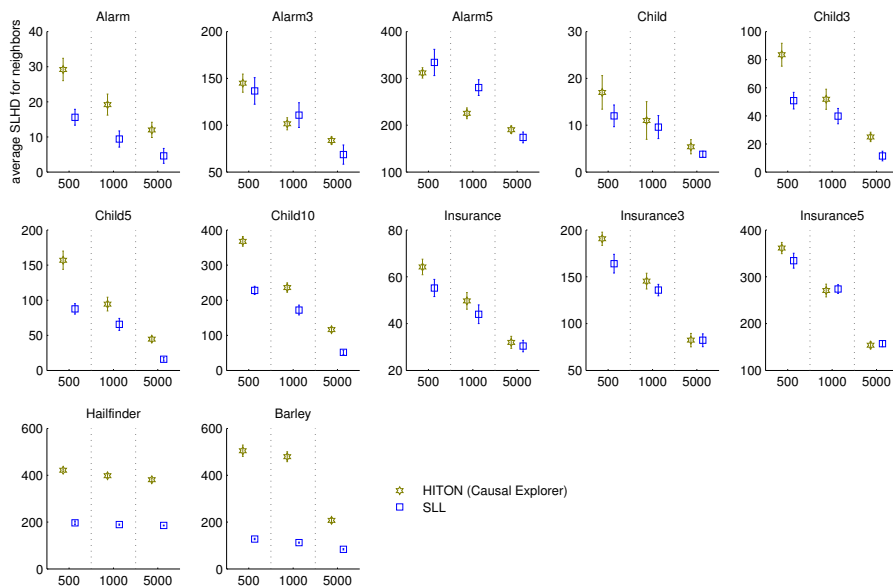


Figure 1: Average SLHD (Sum of Local Hamming Distances) between the returned neighbor sets (parents and children) and the true neighbor sets for different data sizes (500, 1000 and 5000 samples). Standard deviations are shown as vertical bars.

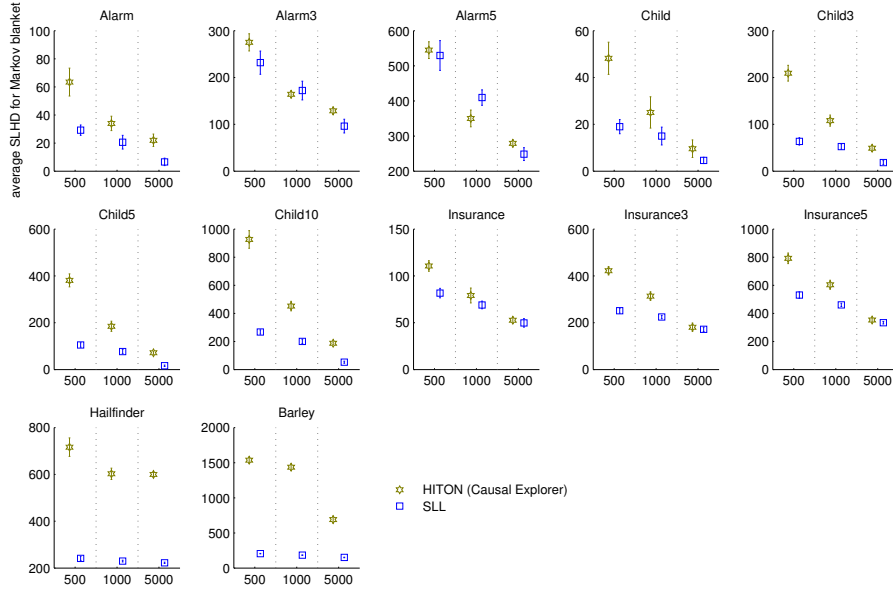


Figure 2: Average SLHD between the returned Markov blankets and the true Markov blankets.

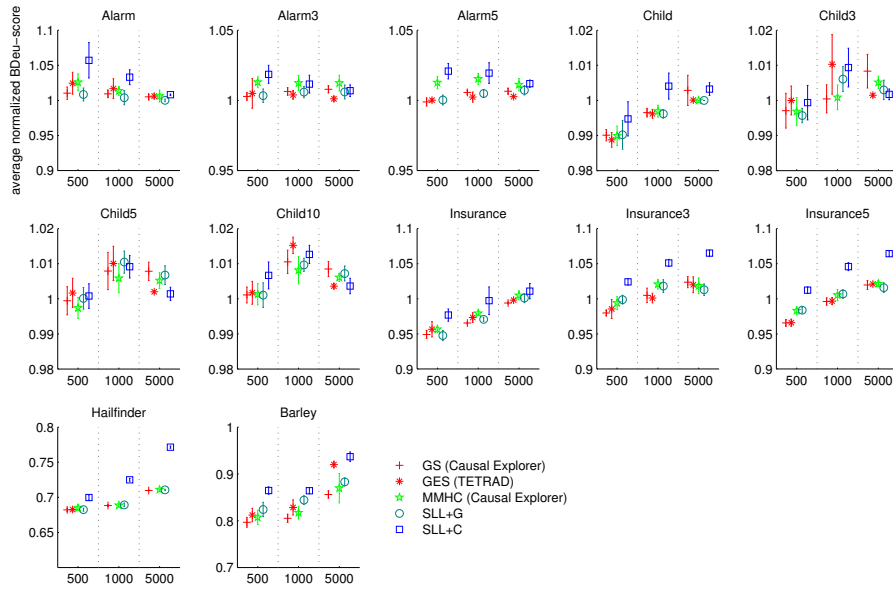


Figure 3: Average normalized score of the returned network structures. Smaller is better and 1.0 corresponds to the true network.

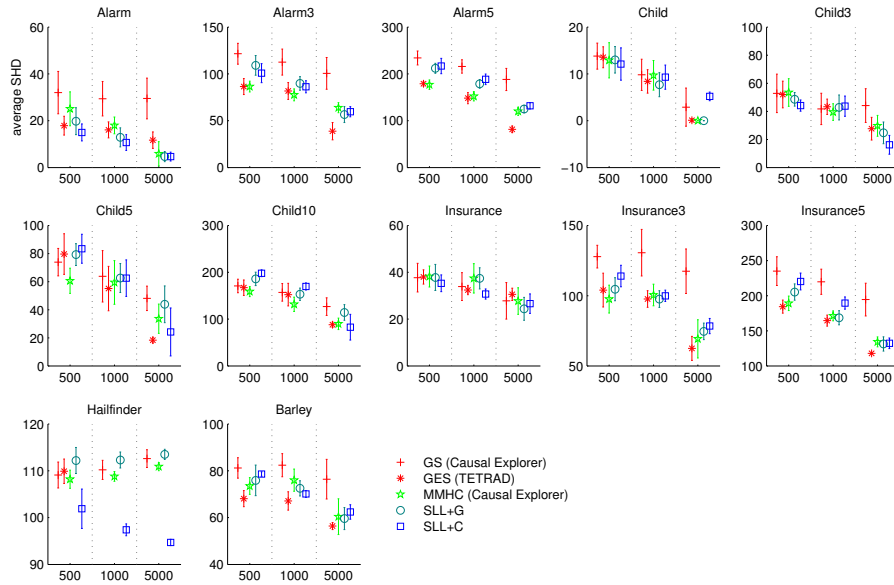


Figure 4: Average SHD (Structural Hamming Distance) between the returned structures and the true structure.

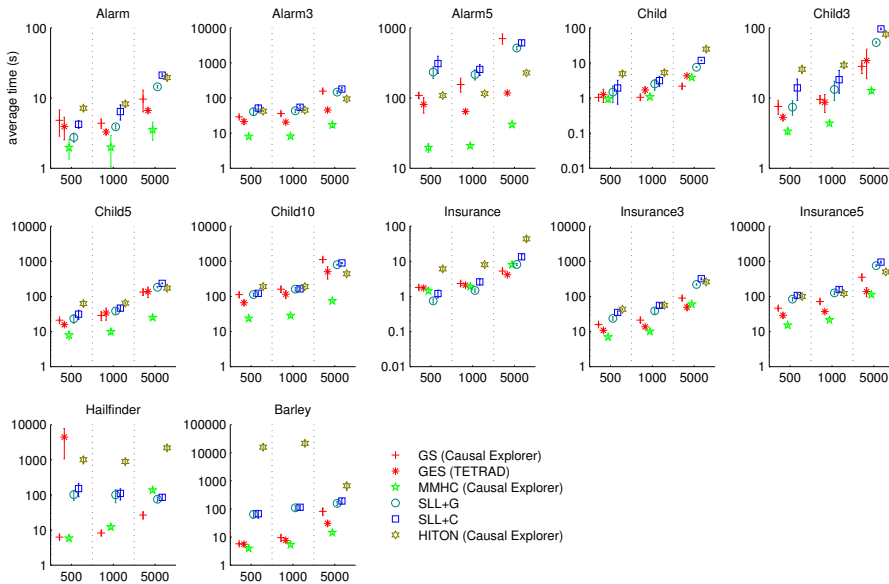


Figure 5: Average running times for the algorithms.